

Agenda Items: RWG Monthly Meeting 25 August 2020



- 1. Introduction and adoption of minutes:** Review of previous minutes and follow up action from previous minutes
- 2. Returns Update:** Update on return figures from DTM dashboard/Return Index
- 3. Situational update on returns:** Inputs from RWG field teams and CCCM
- 4. Return and Durable Solutions Findings:** Presentation by REACH
- 5. Reintegration and Support in Northern Iraq:** Overview of findings from consultations by Maltesers int.
- 6. AOB**



Situational Update on Returns

RWG Monthly Meeting 25 August 2020

Key Updates – Overview

- **Erbil:** Camps continue to receive new arrivals – including 65HH in July. The majority of these IDPs returned to their AOO in Ninewa in recent months but decided to return to camps, citing security, challenges with livelihoods and inability to pay rent in Areas of origin.
- **Sinjar/Ba’aj:** Since the beginning of August, returns from Dohuk to Sinjar & Ba’aj stalled due to confirmed COVID-19 cases in four IDP camps in Dohuk (Chammishko, Bajet Kandala, Dawoudia and Kabarto), which lead to route closure between Dohuk and Ninewa. However, return movements resumed around a week ago, allowing more than 100 households to return back to Sinjar.
- **Sinjar:** one confirmed COVID-19 case and another suspected case were identified in Sinjar more than a week ago. Consequently, local authorities imposed some mitigation measures including banning entry to the district and closing all not essential businesses. Reportedly, fears of COVID-19 transmission created some tension between returnee and host communities. However, this has since improved with sensitization and messaging.
- **Ninewa:** Individual departures from Ninewa camps continue, whenever the situation allows. Most of AoO for such departures are Mosul City & West Ninewa area.
- **Al Hol:** During August 2020, two return movements from Al Hol to Ninewa were tracked. Returnee household crossed the border through Rabea and Sinuni respectively. All returnees are female headed households and specialized actors are following up with their cases.

Key Updates – Centre/South

- **Al-Shams informal settlement:** Departure of 17 HHs to AoOs in Al-Qaim/Anbar governorate expected to take place on 24th Aug 2020. RWG is working on developing a Return/Integration Plan for Al-Shams settlement – will be shared with Baghdad and Anbar sub-national ICCG for their inputs
- **Diyala:** MoMD declared on 11th August 2020 that the local government of Diyala will facilitate the return of more than 1,000 IDP HHs to their AoOs in Muqdadiyah, Saadiyah, Jalawlaa, Jbara and Bani Zain. Further details will be considered in later slides
- **Tuz:** 18 HHs returned from Markaz Tuz to Hlewa Kabeera village in June after being displaced since 2014, the return was facilitated by local authorities and ISF. 30 HHs are expected to return to Albu Hasan villages in Amerli district after a reconciliation dialogue been held between the tribes to facilitate the return of IDPs. The main obstacles to return in Amerli and Tuz villages are the destruction in private properties and the public infrastructure. Tuz PSWG has been established to discuss these returns and share relevant information

Diyala

On 11th August 2020, Local government of Diyala and MoMD informed RWG that 5 return processes will take place in Diyala as per the below timelines:



RETURN OVERVIEW SHEET

	Security Clearance received				Registered by Committee in AoO				Returned				Failed Returns					Needs Assessment		
Village / Neighborhood of Return	#HH	#Ind.	Date	Source	#HH	#Ind.	Date	Source	#HH	#Ind.	Date	Source	#HH	#Ind.	Date	Source	# of HH and Individuals who we track arrived in AoR	Yes / No	Org.	Sec
Chamarkhi									40	NA	16-Aug-20	UNHCR					40			
Hunbus									110	NA	16-Aug-20	UNHCR					110			
Al-Mansouriyah MP									67	NA	16-Aug-20	UNHCR					67			
Al-Wasat									11	NA	16-Aug-20	UNHCR					11			
Al-Tayha									11	NA	16-Aug-20	UNHCR					11			
Al-Gawam									7	NA	16-Aug-20	UNHCR					7			
Abo Dihin village									18	NA	18-Aug-20	DTM					18			
Al Isaiwed Village									27	NA	18-Aug-20	DTM					27			
Al Shekha Village									12	NA	18-Aug-20	DTM					12			
Al Tinaira Village									17	NA	18-Aug-20	DTM					17			
Hembes Village	451	NA	9-Aug-20	DOC MoMD	293	TBC	11-Aug-20	DOC	109	NA	18-Aug-20	DTM					109			
Muaskar Al Mansur village									44	NA	18-Aug-20	DTM					44			
Nofal village									9	NA	18-Aug-20	DTM					9			
Shamarkhi village									21	NA	18-Aug-20	DTM					21			
Sinsil Al Wasat Village									4	NA	18-Aug-20	DTM					4			
Ahmed Hani Village									32	NA	18-Aug-20	DTM					32			
Al-Asriyah village	580	NA	9-Aug-20	DOC MoMD	565	TBC	13-Aug-20	DOC	15	NA	18-Aug-20	DTM					15			
Rabiah Village									24	NA	18-Aug-20	DTM					24			
Rabe'a	580	NA	9-Aug-20	DOC MoMD	565	TBC	13-Aug-20	DOC	70	NA	15-Aug-20	Erada					70			
Markaz Saadiyah									11	NA	15-Aug-20	Erada					11			

AoR

AoD



Average: 18989.71429 Count: 16 Sum: 132928

Saad camp:

- On 19th August 2020, Diyala Operations Command and Diyala Local Police Command sent representatives to Saad camp to provide a general security overview in the AoOs
- Saadiyah Mayor has also sent a representative to provide insights about the operations of public services (water, electricity, education, health, ...etc). He also provided information about the recovery of local markets and business trends. The plan is to have representatives from Jalawlaa and Muqdadiah conduct the same approach to enable the residents of Saad camp understand the dynamics at AoOs and take the required option

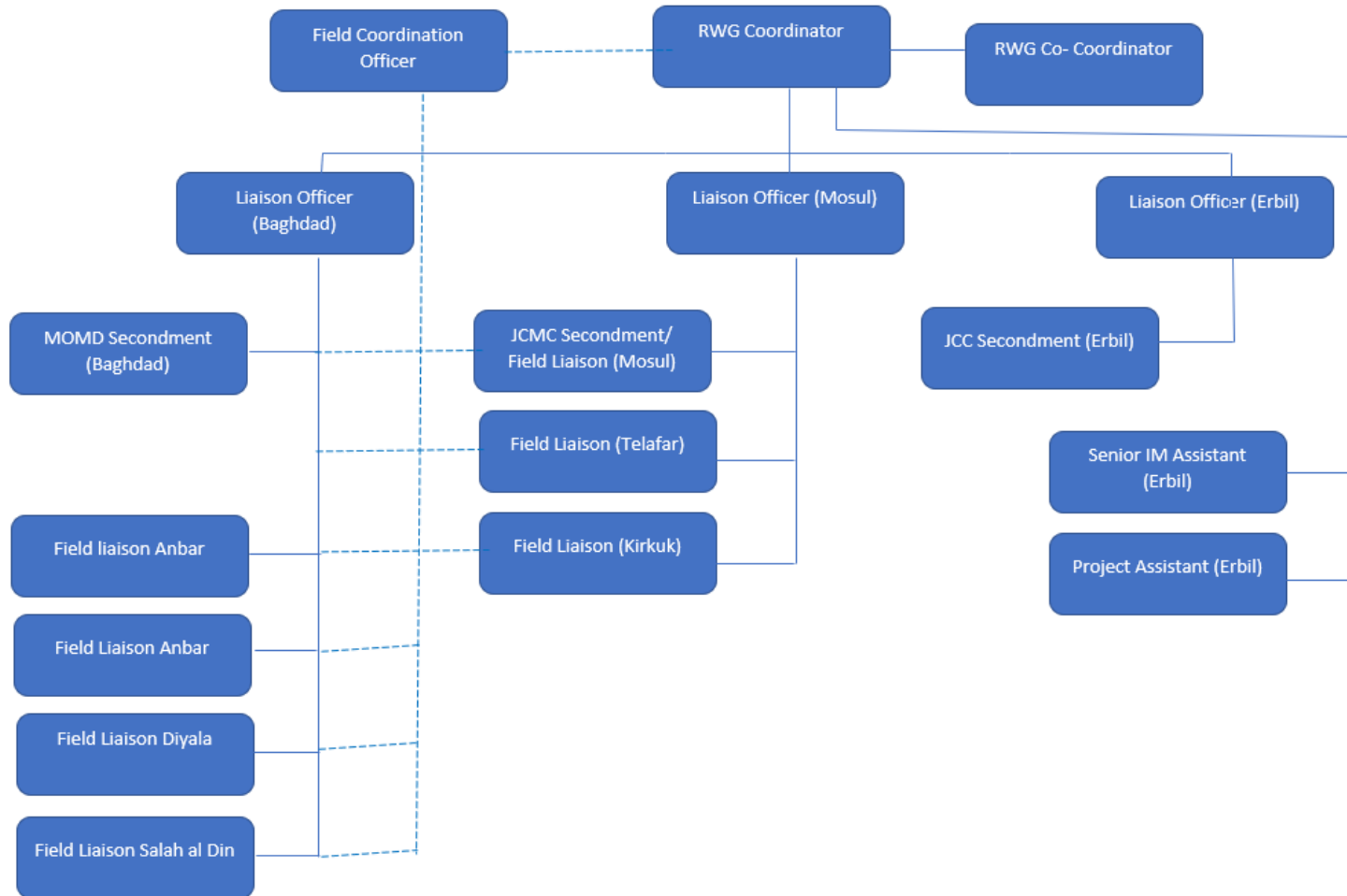
Yathrib Return Follow-up Committee – achievements as of 15th Aug

- Department of water extended the main water pipe in Albo Suhail/Zor Albo Hishma with additional 400m to enable 132 HHs have access to clean drinking water
- Three clean-up campaigns conducted by the local municipalities to clean-up the irrigation canal that feed hundreds of agricultural lands with water. Humanitarian partners will extend their support in this regard in the coming few weeks (CfW approach)
- Departments of Water and Electricity connected Albo Attiya WTP (100 cub.m/h) and Al-Basheer WTP (100 cub.m/h) on the emergency electricity line to reduce the lack of water in overall Yathrib, additional approach was used for 4 other WTPs (Bashiyah & Albo Mhedi)
- Four campaigns conducted to remove excesses on the main water network (these excesses were made to irrigate the agricultural lands)



RWG Updates

Team

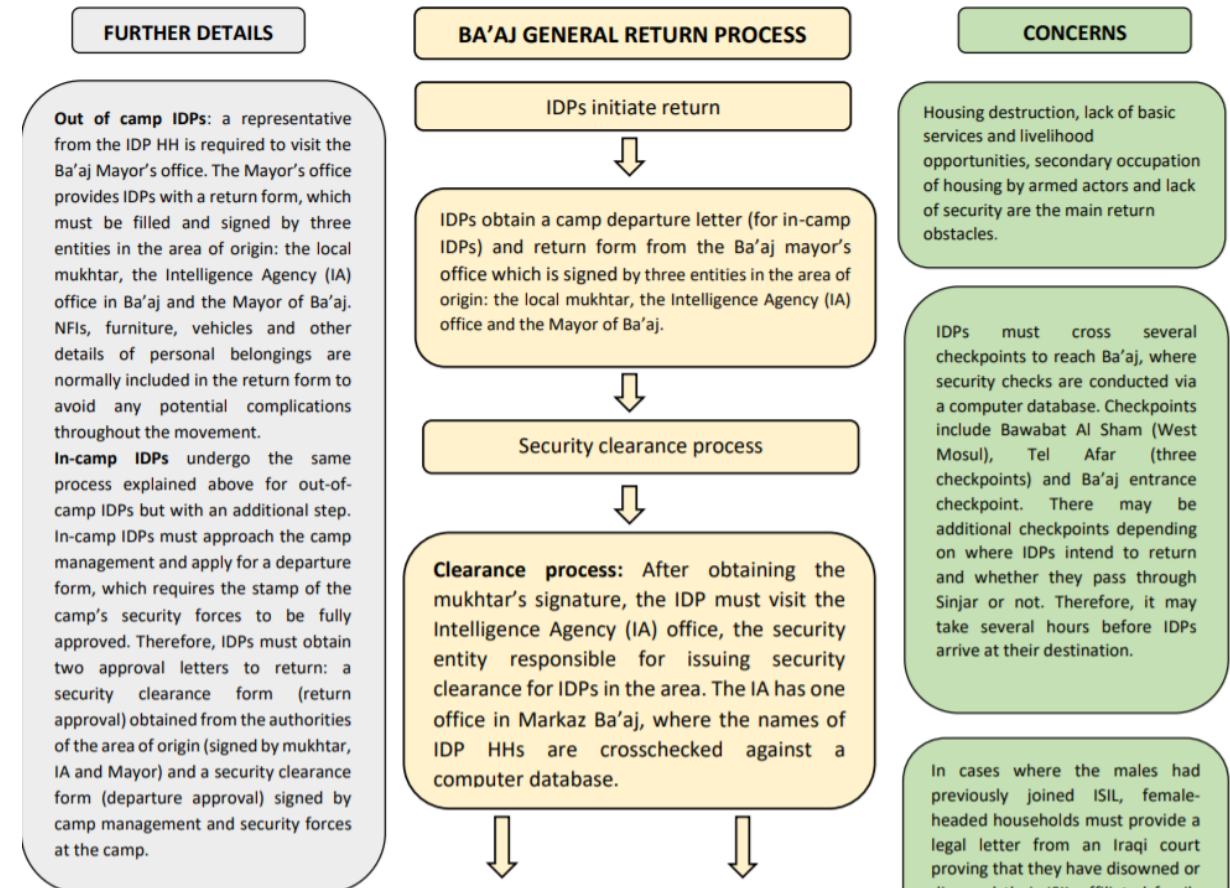


- National – 2 Team Members
- KRI – 4 Team Members
- Ninewa/Kirkuk – 4 Team Members (1 vacant)
- Centre/South – 6 Team Members (1 vacant)
- GRC Secretariat, secondments to MOMD, JCC, JCMC

RWG - Key Areas of Focus

Government Support & Capacity Building - Coordination – Information – Advocacy/Influencing

- Sit Reps:** Dedicated and bi-weekly with key updates
- Return Process Mapping:** Recently shared for Ba’aj and Hawiga, also available for Suly and Sinjar – on-going elsewhere.
- MOMD Grant mapping:** Updated note on the MOMD return grants in July – summarizing grants disbursed in 2020, steps to obtain the grant and a comparison between 2019 and 2020 RWG is currently developing CwC messages and materials (flyers, posters etc.) that explain the procedures required to apply for the MOMD return grant and livelihood grant



RWG - Key Areas of Focus

Government Support & Capacity Building - Coordination – Information – Advocacy/Influencing

4. **Governorate overviews:** Outlining situations in areas of return, using return index information, to be used at field level
5. **Sub-national Coordination:** e.g. support to Yatrib committee, al shams plan
6. **Research & Assessments:** Local integration briefs, REDs
7. **Capacity Building and Government Support:** Developing training workshops for authorities on Durable Solutions, coordinating with health and CwC on COVID materials for authorities,



Government Support & Capacity Building - Coordination – Information – Advocacy/Influencing

8. Governorate Plans of Action

- Durable solutions plans by governorate
- Part of on-going project, brought under the strategic overview of DSTF with its creation and intended to fall within the framework of the national strategy while being led at the governorate level
- Facilitated by RWG teams but ultimately to be owned/driven by Government in line with best practice
- Will require consultations and engagement with different levels of authorities, communities and leadership, as well as inputs by other actors, including but not limited to humanitarian
- Starting with Ninewa due to initiation by government counterparts